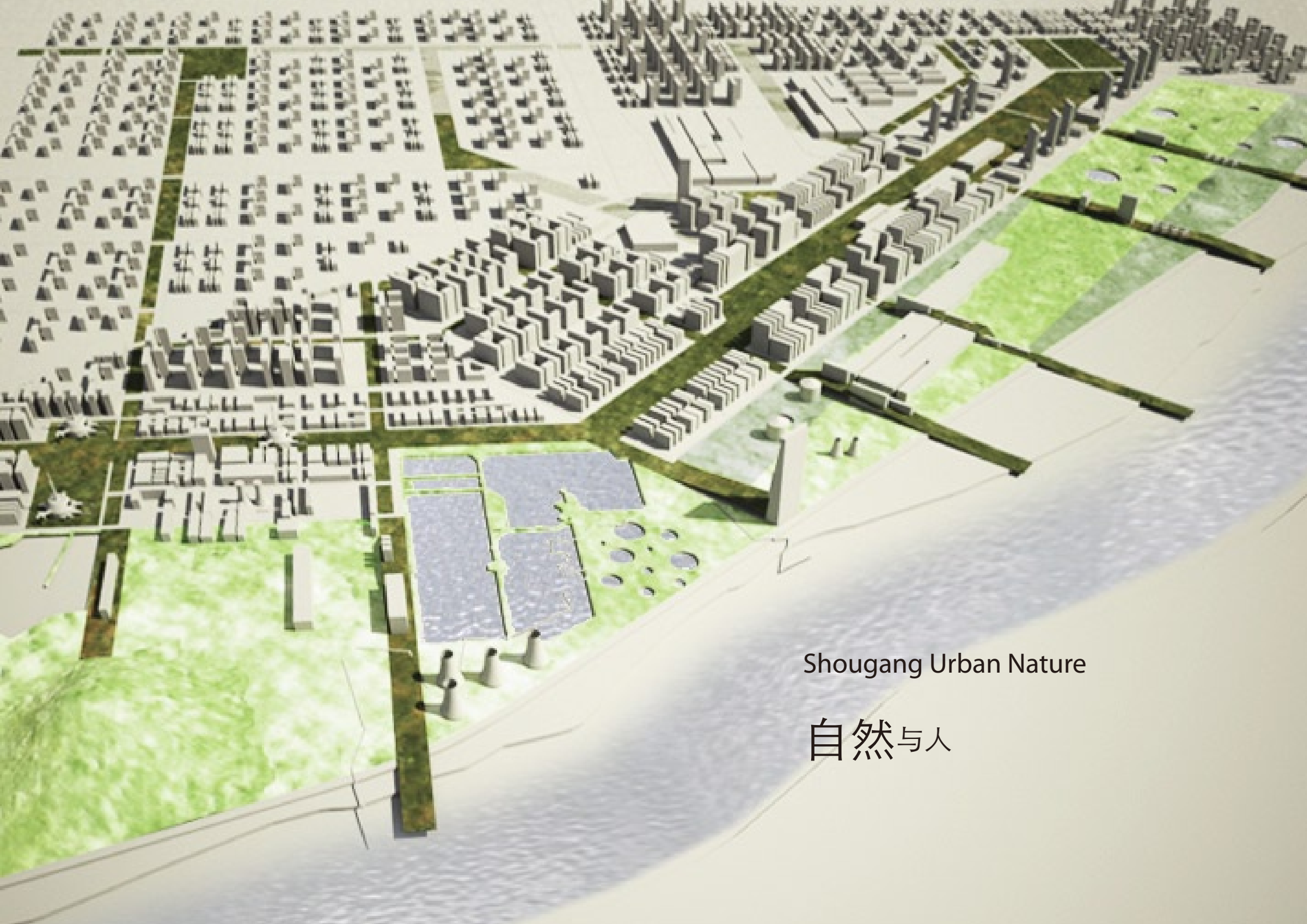


MIT OpenCourseWare  
<http://ocw.mit.edu>

11.307 Beijing Urban Design Studio  
Summer 2008

For information about citing these materials or our Terms of Use, visit: <http://ocw.mit.edu/terms>.



Shougang Urban Nature

自然与人

Our vision  
三个要点





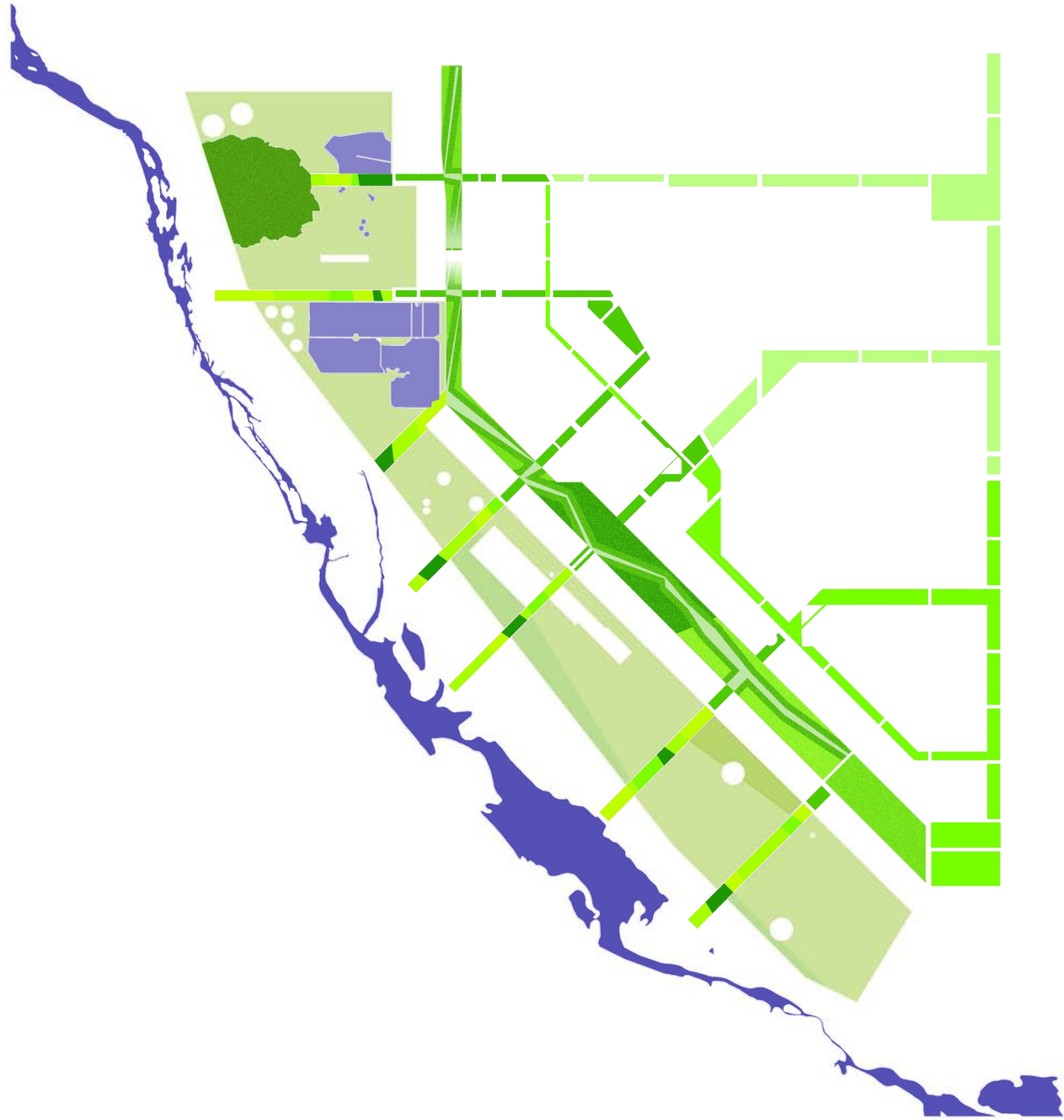
Zoo  
动物园



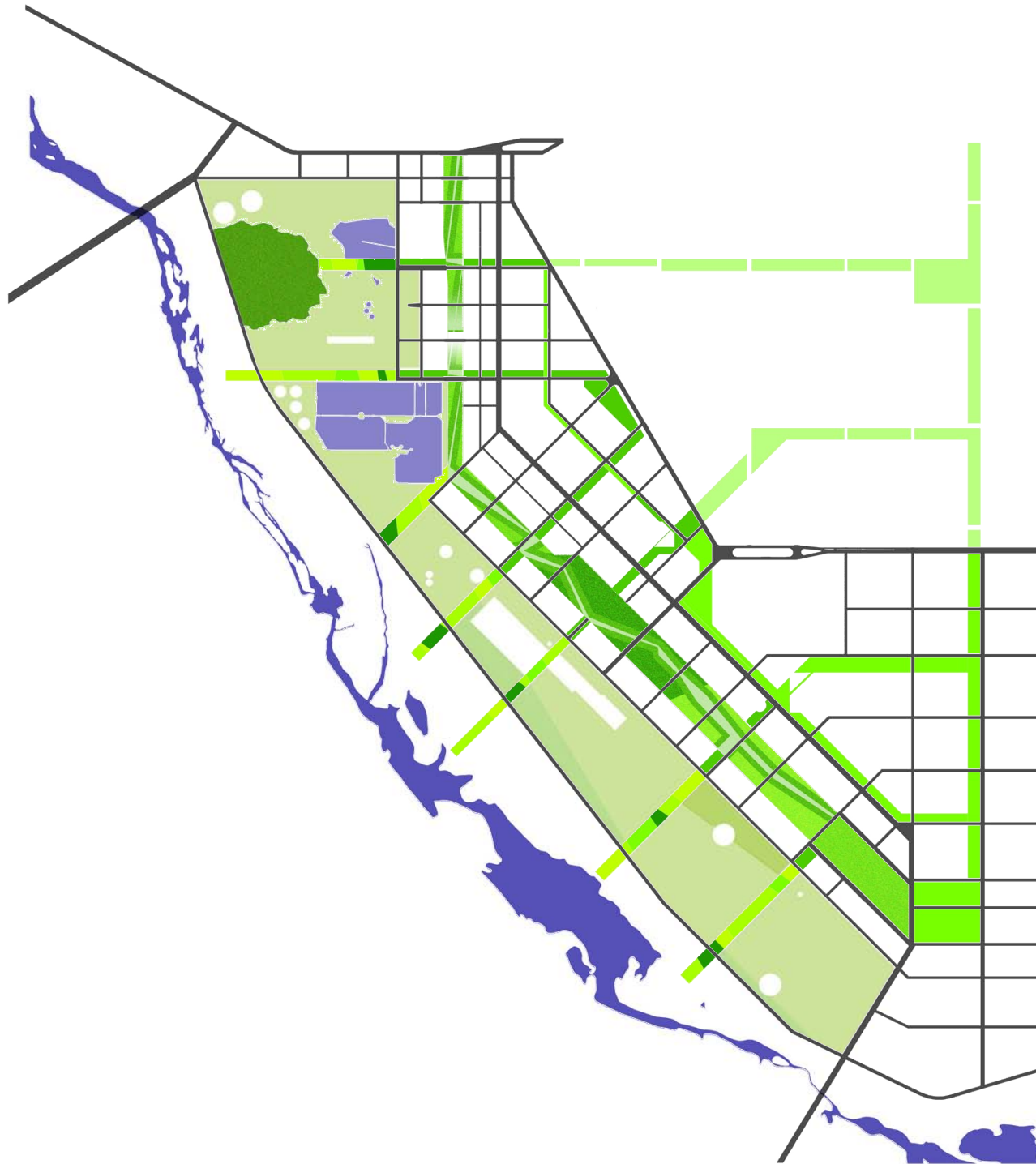
Zoo  
动物园  
Central Green  
中央公园



Zoo  
动物园  
Central Green  
中央公园  
Green Band  
绿带

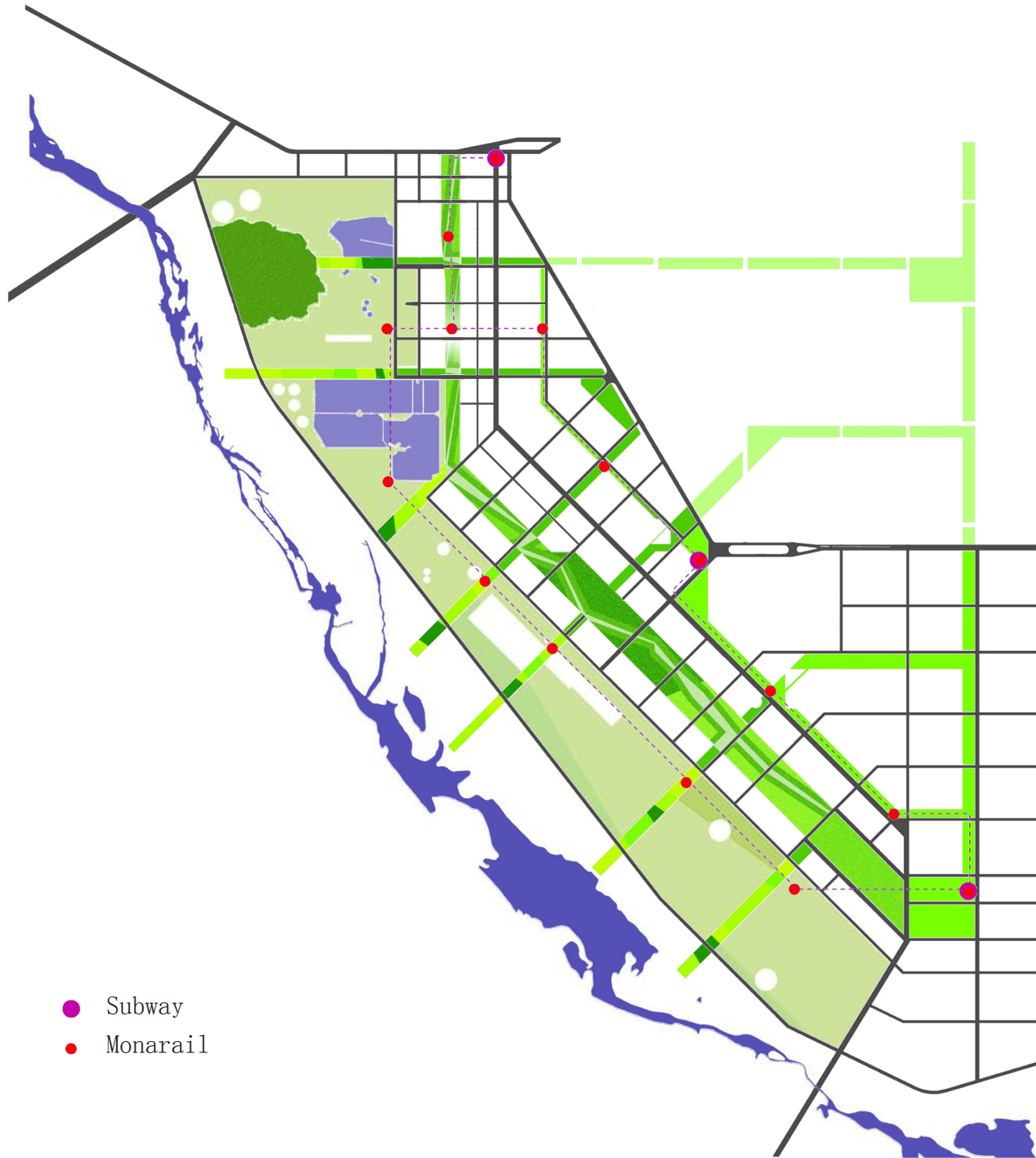


Zoo  
动物园  
Central Green  
中央公园  
Green Band  
绿带  
Corridors  
绿化通道



- Zoo  
动物园
- Central Green  
中央公园
- Green Band  
绿带
- Corridors  
绿化通道
- Roads  
道路



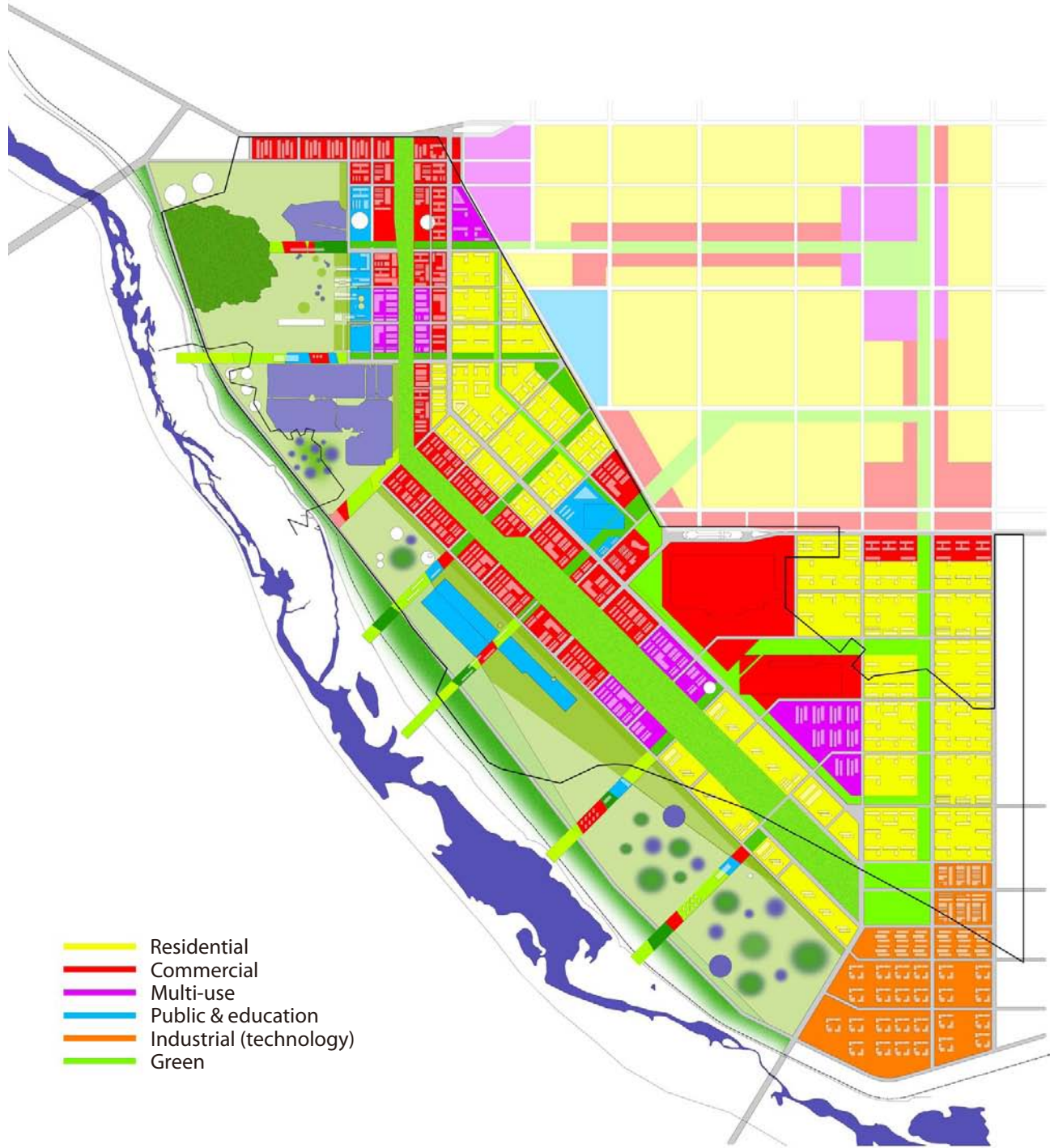


- Subway
- Monarail

- Zoo  
动物园
- Central Green  
中央公园
- Green Band  
绿带
- Corridors  
绿化通道
- Roads  
道路
- Transportation  
公共交通

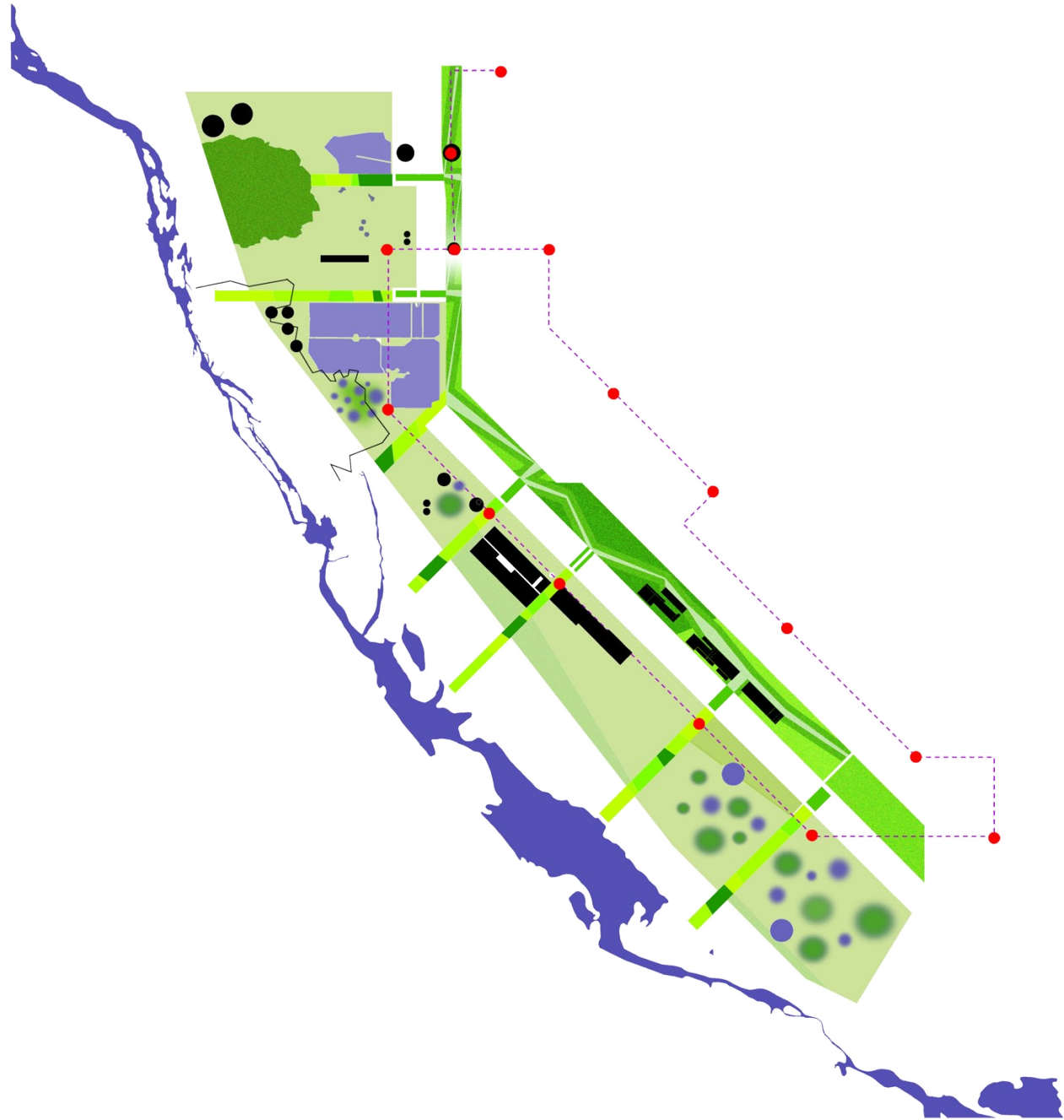


Master plan  
总体规划



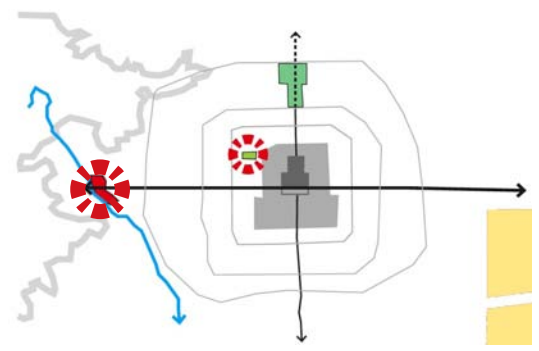
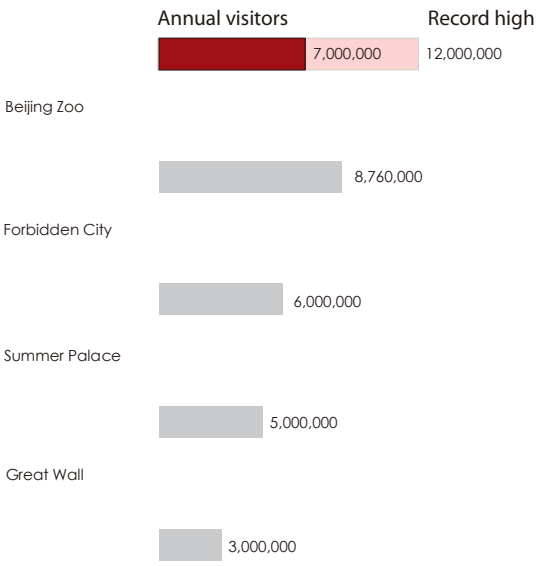
Land use  
土地利用

- Residential
- Commercial
- Multi-use
- Public & education
- Industrial (technology)
- Green



Focal point: Zoo  
焦点：动物园

**Programs** **Tourists**



Amusement Park in Shenzhen



Visitors  
游客

Assets  
绿色财富

Cleansing  
净化环境

Reuse  
工业区再利用



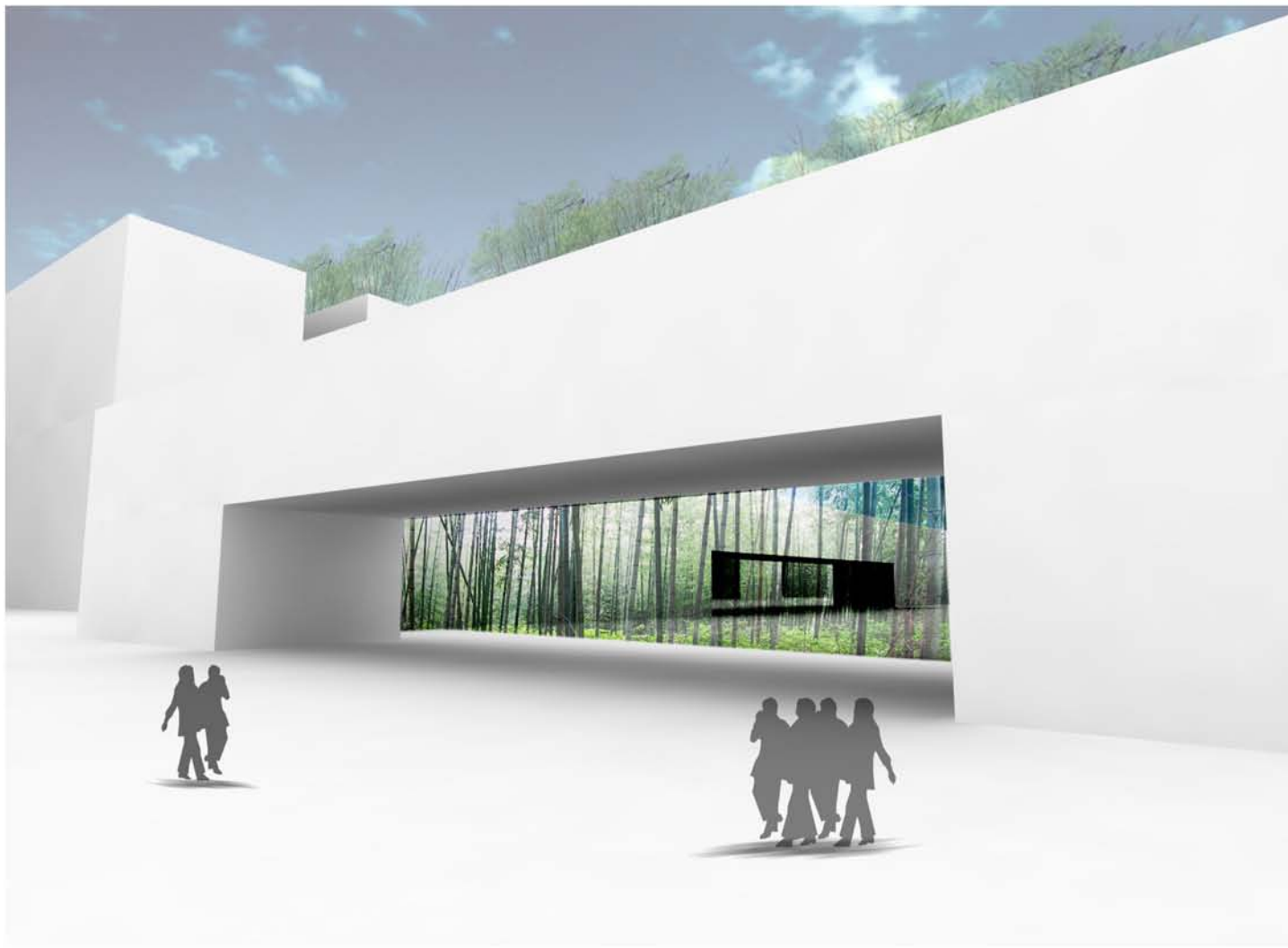
17% of the site



Commercial  
商业

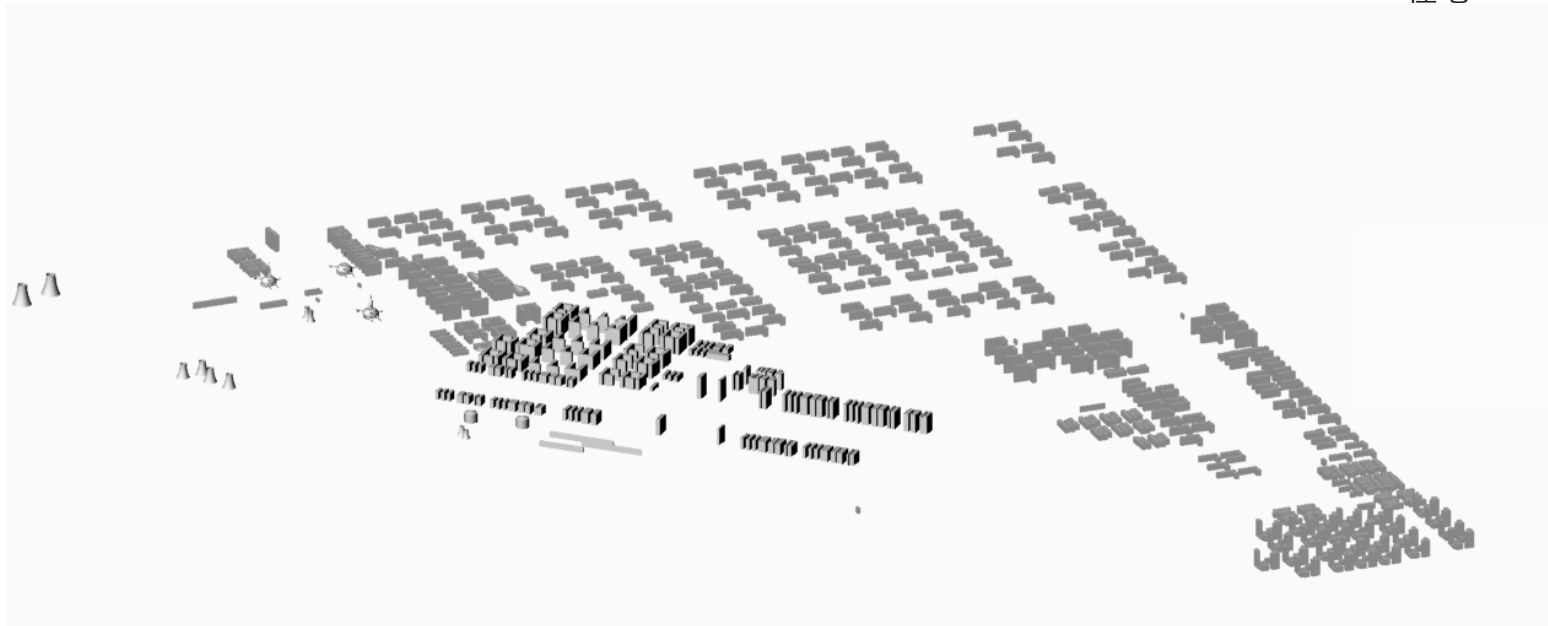






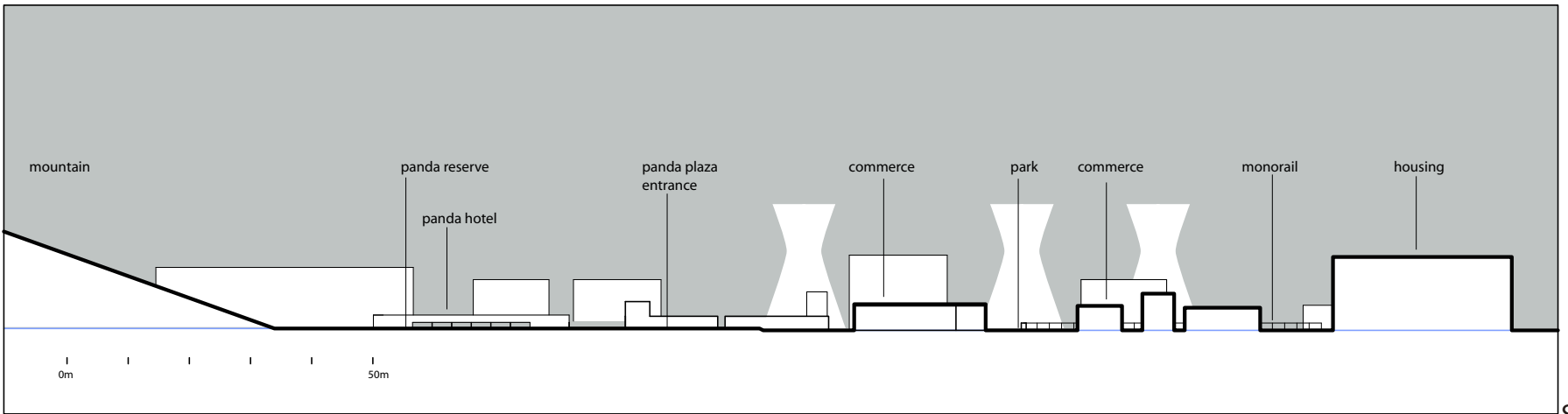
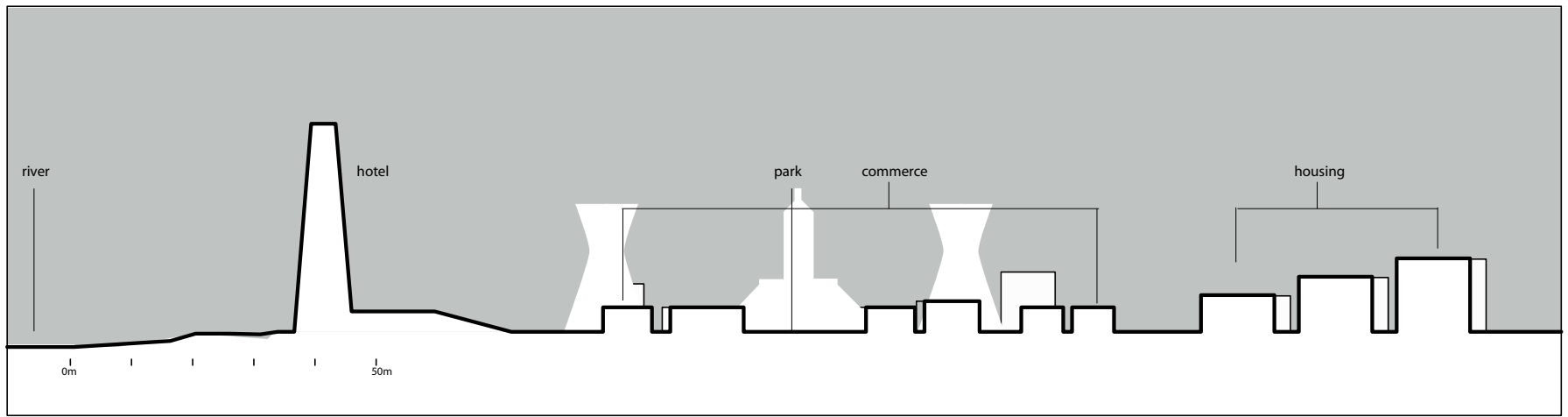
Looking onto the panda reserve from the hotel  
从酒店看熊猫馆

Housing  
住宅

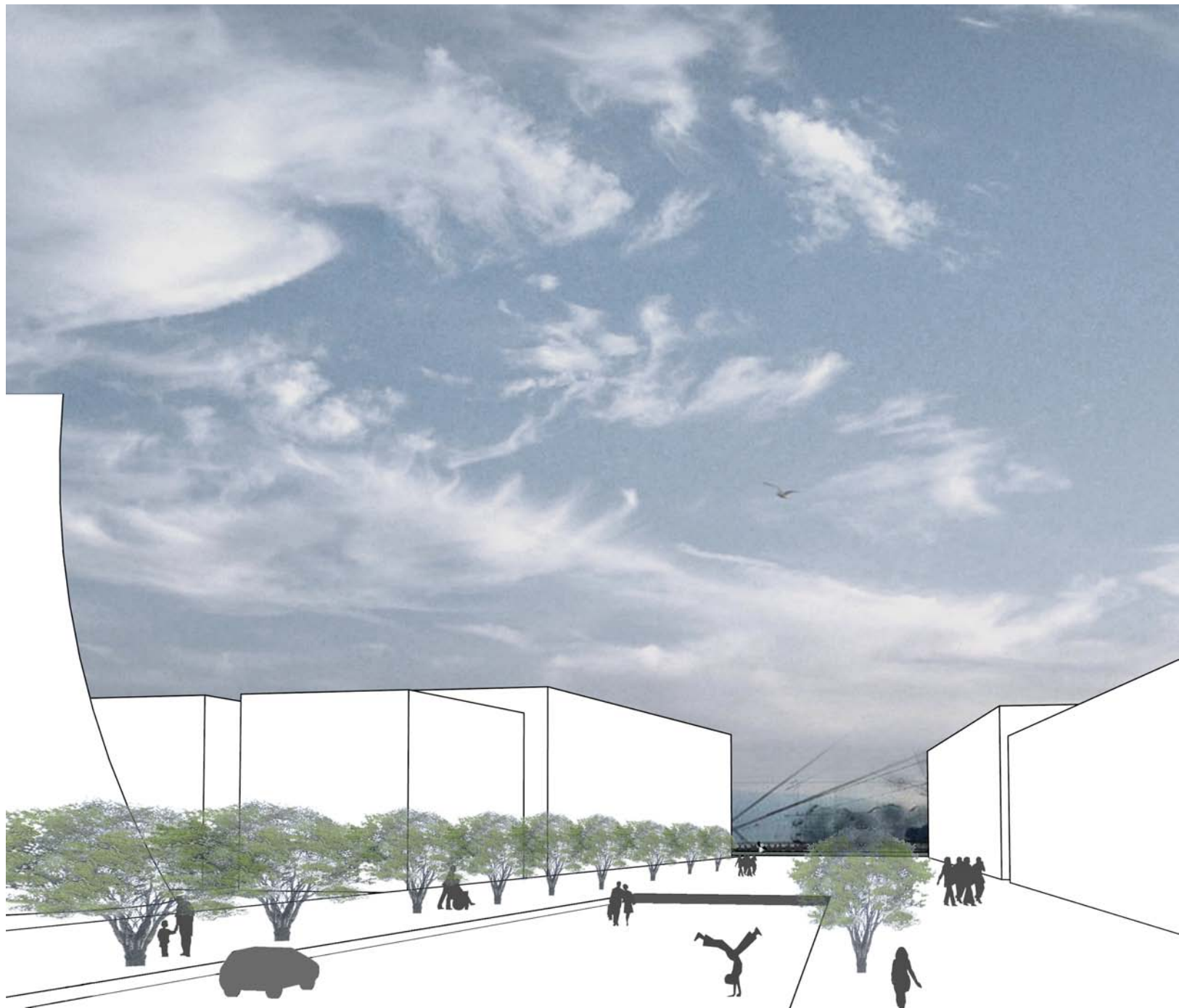




Illustrative plan  
详细规划



Sections  
断面

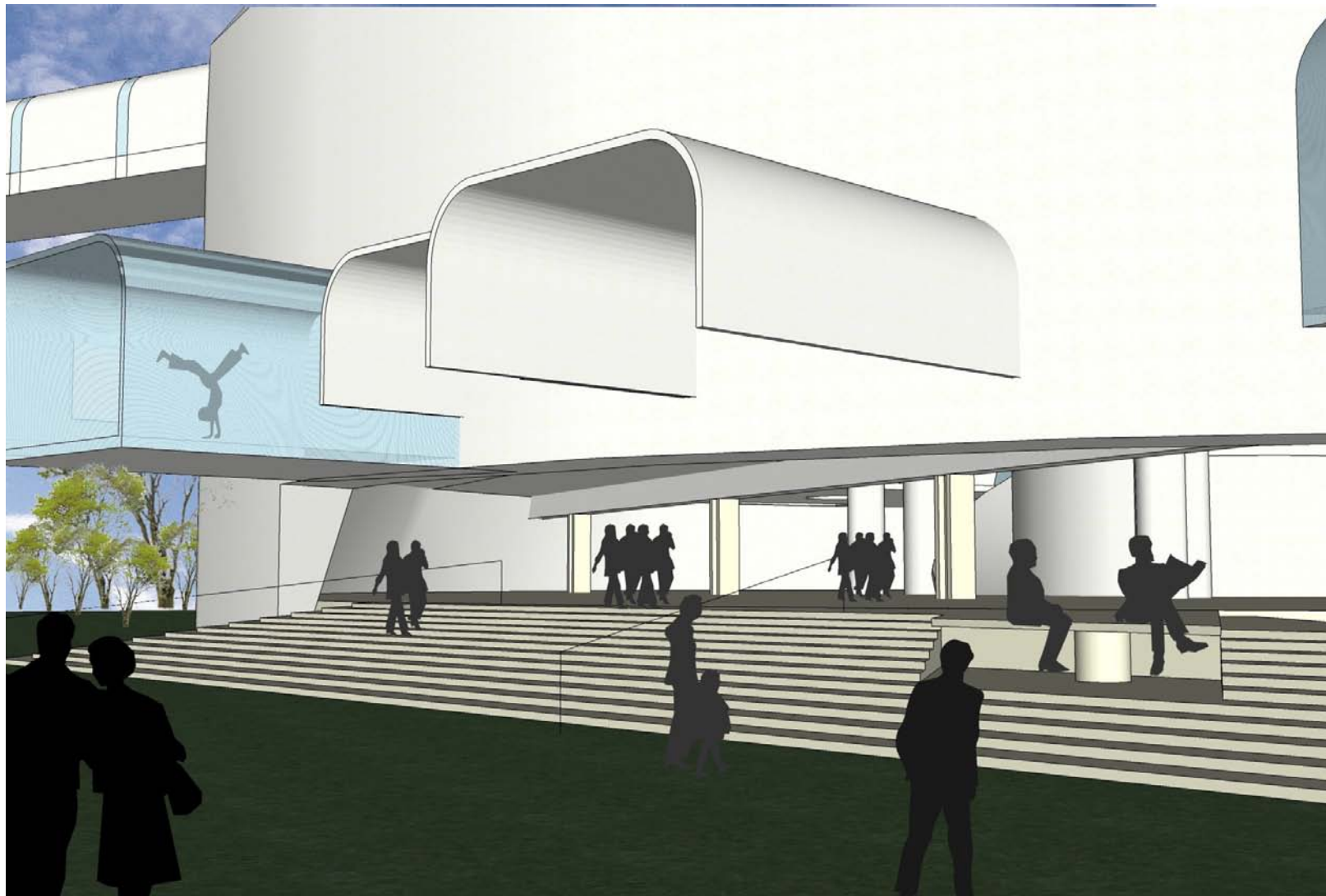


Plaza leading to panda's area  
导向熊猫公园的绿廊

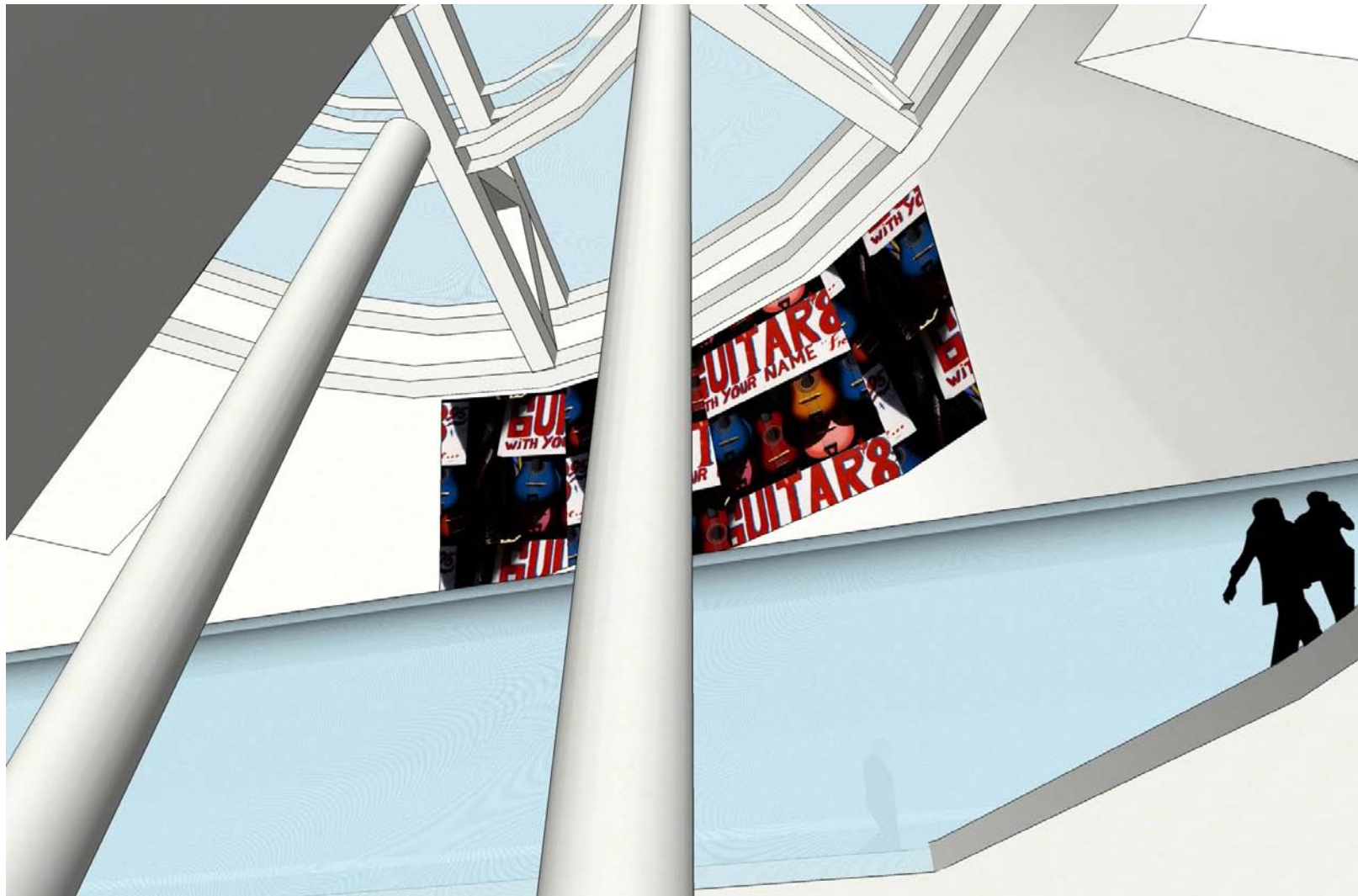


平平安安回家去

Furnace 4  
四号高炉

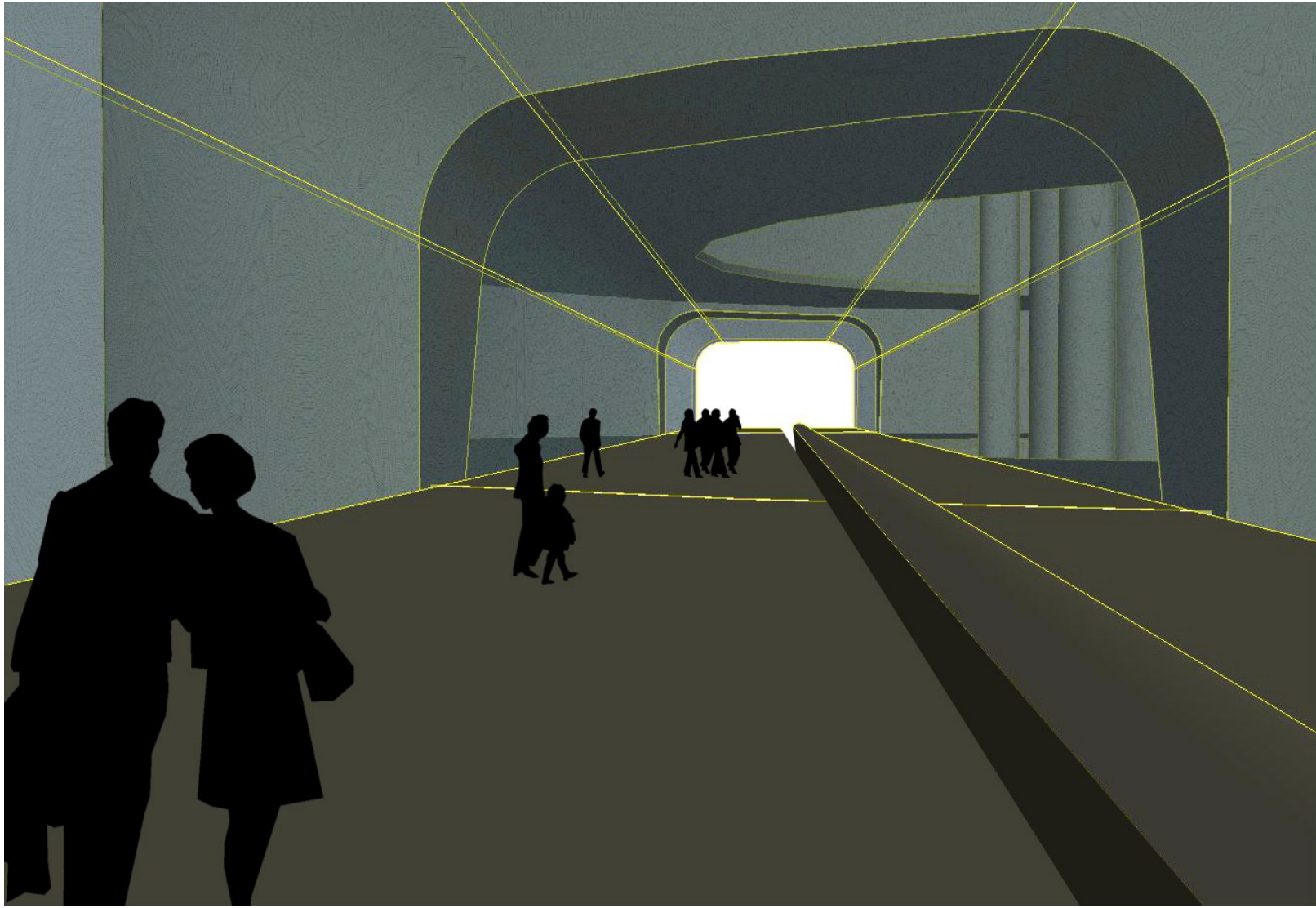


Entrance  
高炉入口

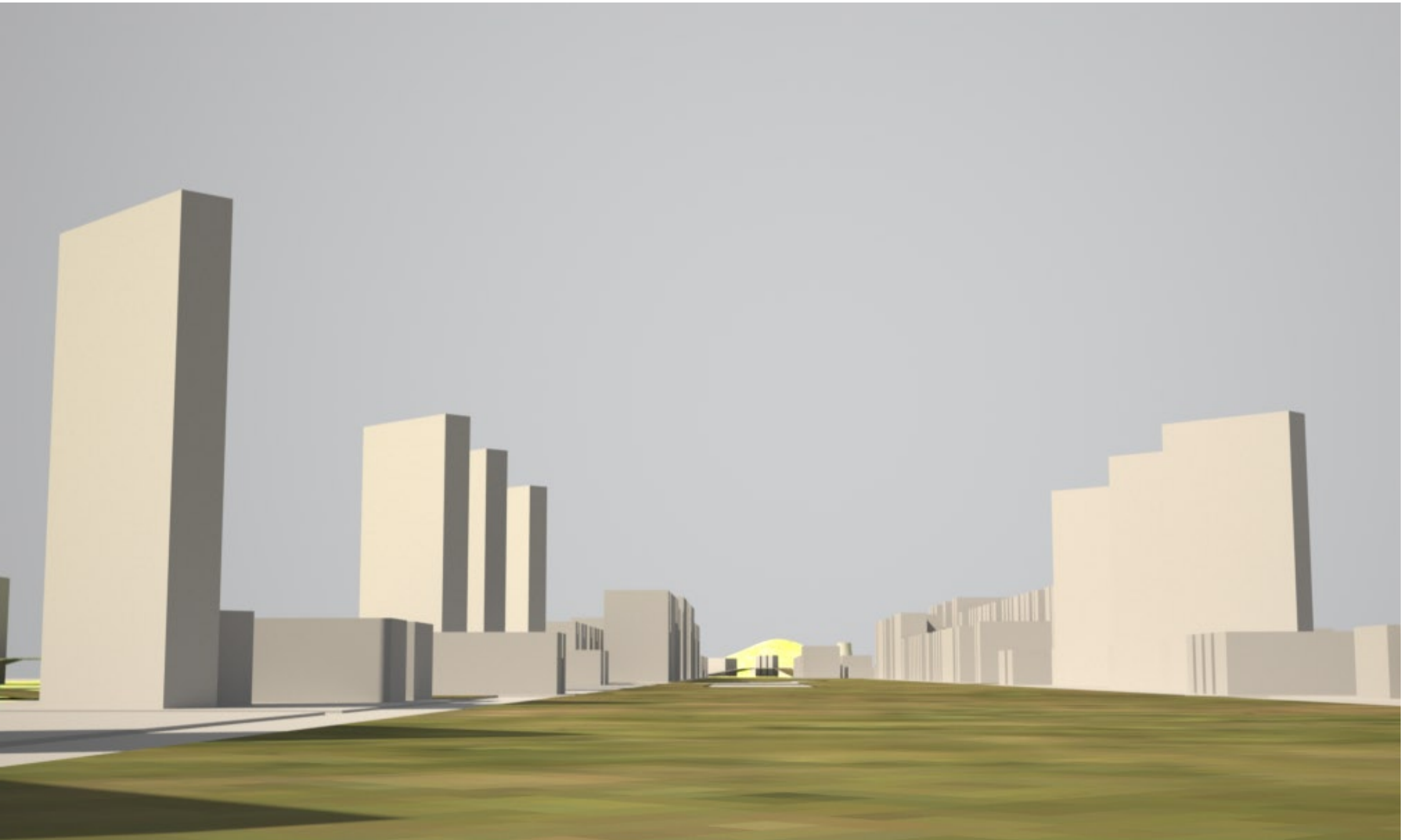


Inside furnace 4  
高炉内景





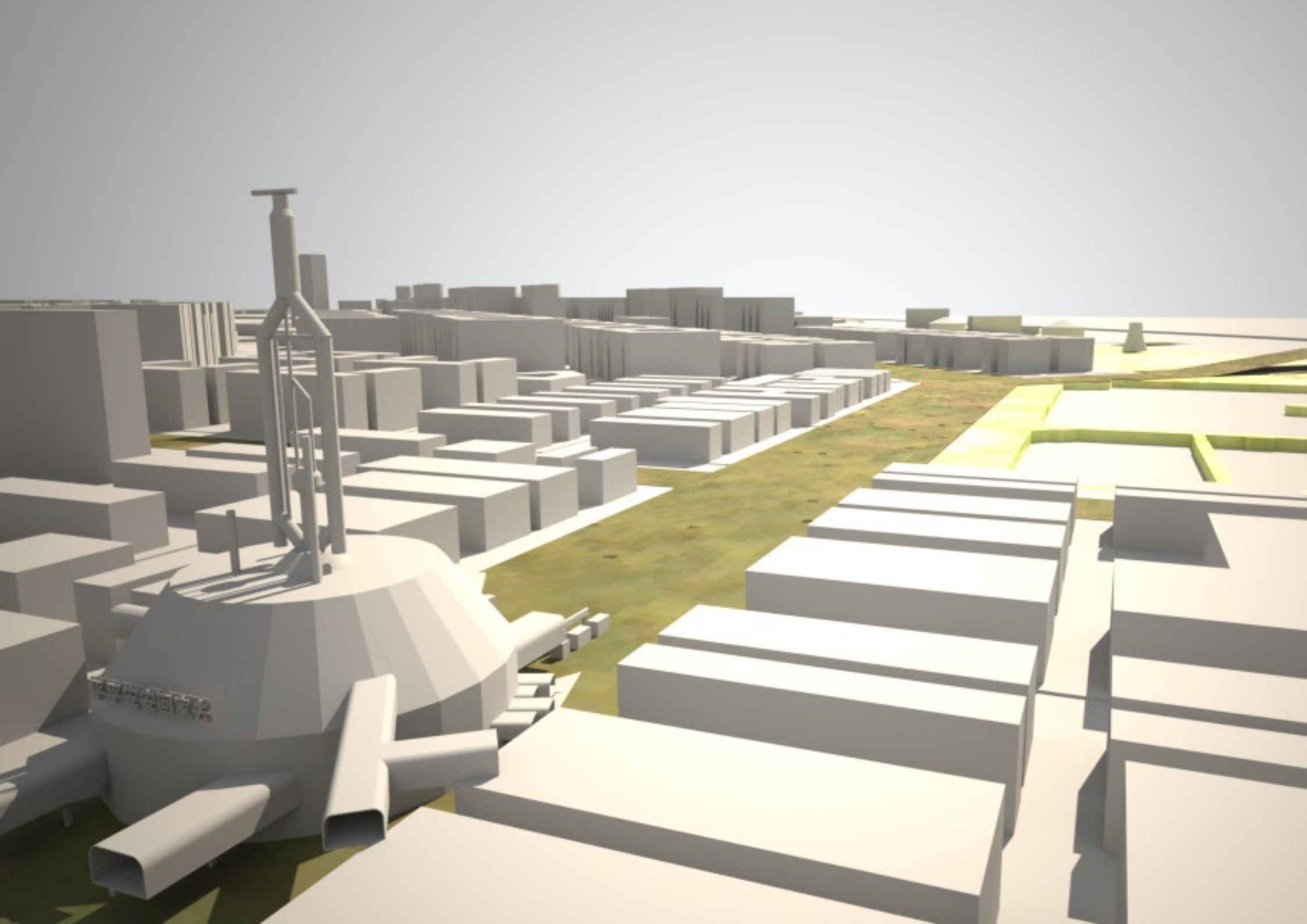
Monorail platform  
单轨站台

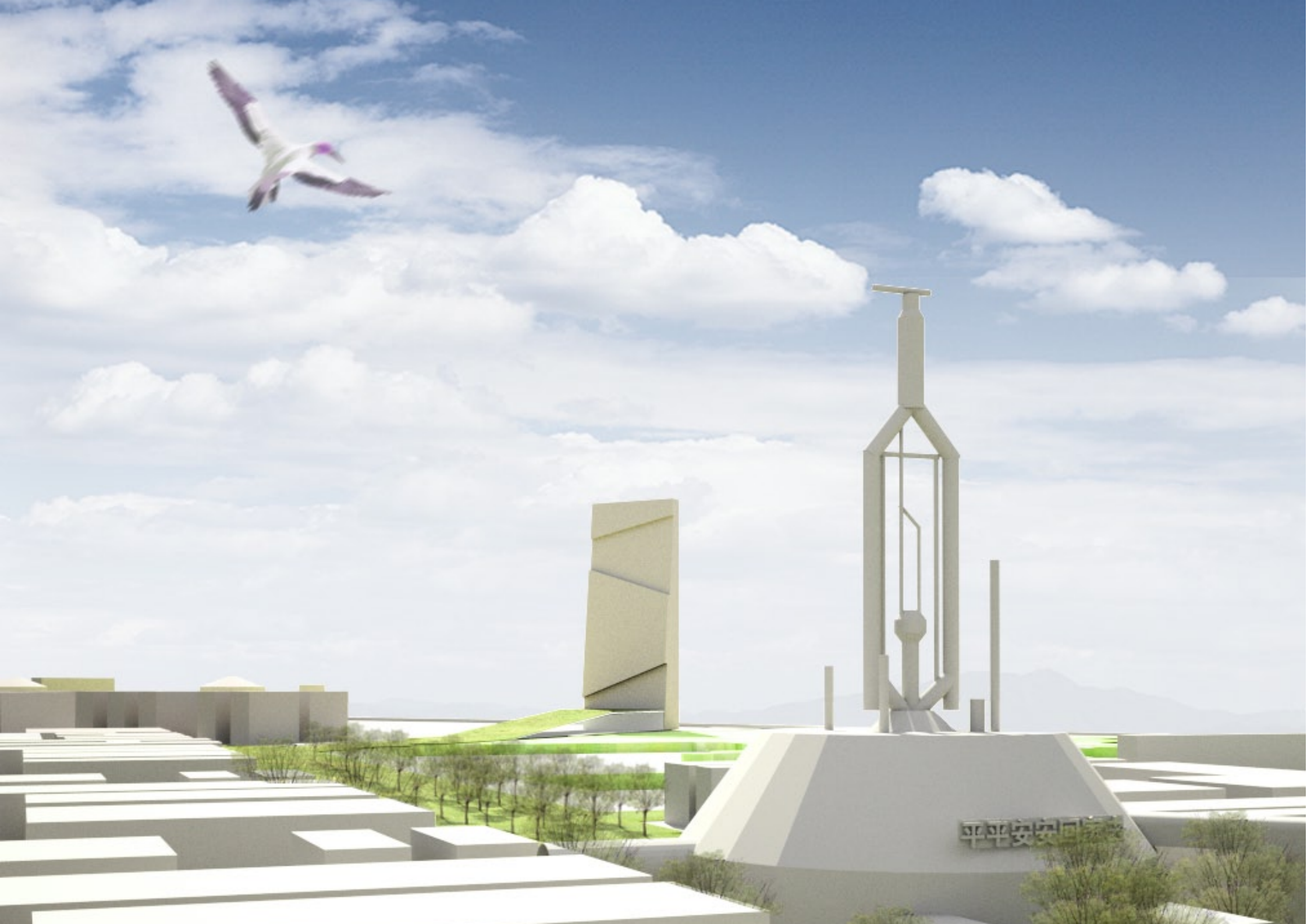


Central green  
中央公园



Walkway through marsh area  
湿地公园的通道





平安安

