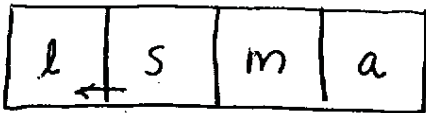
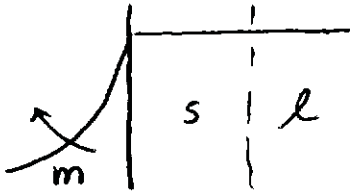


3.044 MATERIALS PROCESSING

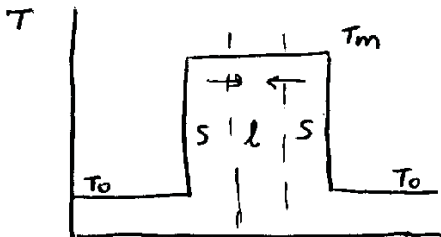
LECTURE 10



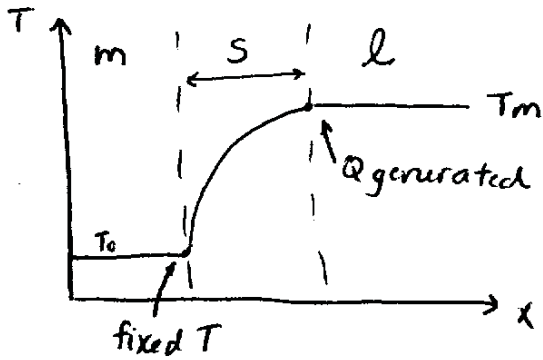
1. Casting: Thick mold, mold conduction limiting: $s \propto \sqrt{t} \longleftrightarrow t_f \propto \left(\frac{V}{A}\right)^2$



2. Die Casting: Thin cooled mold, interface limiting: $s \propto t$



3. Thick casting in cooled mold



s/l interface: $\frac{ds}{dt} = \frac{k}{H_f \rho} \left(\left. \frac{\partial T}{\partial x} \right|_x - \left. \frac{\partial T}{\partial x} \right|_l \right)$, where $\left. \frac{\partial T}{\partial x} \right|_l \Rightarrow 0$

$$\Theta_{solid} \cong \text{ERF} \frac{x}{2\sqrt{\alpha_s t}}$$

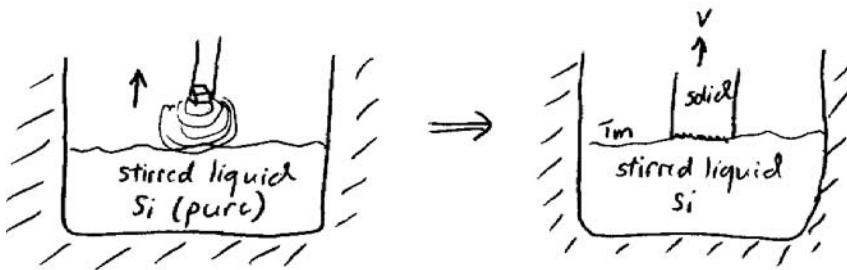
$$\Theta = \frac{T - T_0}{A - T_0}$$

$$s(t) = 2\gamma\sqrt{\alpha_s t}$$

$$t_f \propto \left(\frac{V}{A} \right)^2$$

$$\gamma e^{\gamma^2} \text{ERF} \gamma = \frac{(T_m - T_0)c_{p,s}}{H_f \sqrt{\pi}} \Rightarrow \text{Read } \gamma \text{ off chart}$$

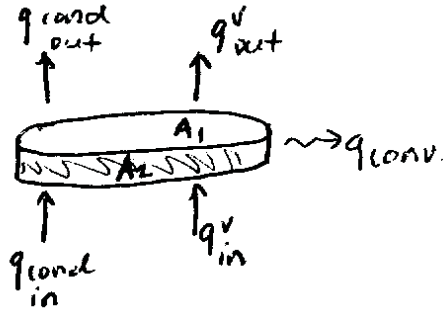
4. Growing single crystal silicon



no T gradients in solid or liquid
inert atmosphere: $h \sim 10 - 20 \frac{W}{m^2 K}$

$$v = \text{pulling velocity} = \frac{ds}{dt} = \frac{k}{H_f \rho} \left(\left. \frac{\partial T}{\partial z} \right|_s - \left. \frac{\partial T}{\partial z} \right|_l \right), \text{ where } \left. \frac{\partial T}{\partial z} \right|_l \Rightarrow 0$$

Assume steady state:



$$\underbrace{\left(-k \left. \frac{\partial T}{\partial z} \right|_{\text{in}} A_1 \right)}_{q_{\text{in}}^{\text{cond}}} - \underbrace{\left(-k \left. \frac{\partial T}{\partial z} \right|_{\text{out}} A_1 \right)}_{q_{\text{out}}^{\text{cond}}} + q_{\text{in}}^v - q_{\text{out}}^v - \underbrace{\left(-h(T - T_f) A_2 \right)}_{q_{\text{conv}}} = 0$$

Solve for q_{in}^v and q_{out}^v :

$$\frac{\text{energy}_{\text{in}}}{\text{time}} = H_{\text{in}} \frac{\text{mass}_{\text{in}}}{\text{time}}$$

$$\dot{m}_w = \rho \dot{V}_{ol}$$

$$\dot{V}_{ol} = \rho A_1 v$$

$$\boxed{q_{\text{in}}^v = \rho A_1 v H_{\text{in}}}$$

$$\boxed{q_{\text{out}}^v = \rho A_1 v H_{\text{out}}}$$

$$\Delta H = \rho c_p \Delta T$$

Solve Heat Balance:

$$\frac{T - T_0}{T_f - T_0} = EXP \left(- \left(\frac{v}{2\alpha} - \sqrt{(v2\alpha)^2 + \frac{2h}{Rk}} \right) z \right)$$

MIT OpenCourseWare
<http://ocw.mit.edu>

3.044 Materials Processing
Spring 2013

For information about citing these materials or our Terms of Use, visit: <http://ocw.mit.edu/terms>.