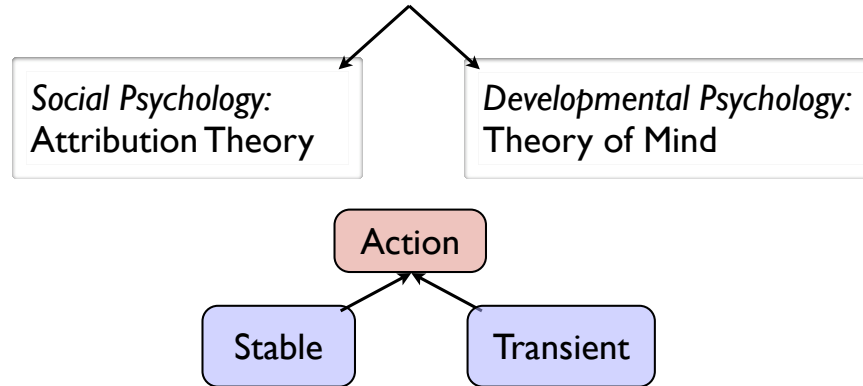


9.916
Attribution and Theory of Mind

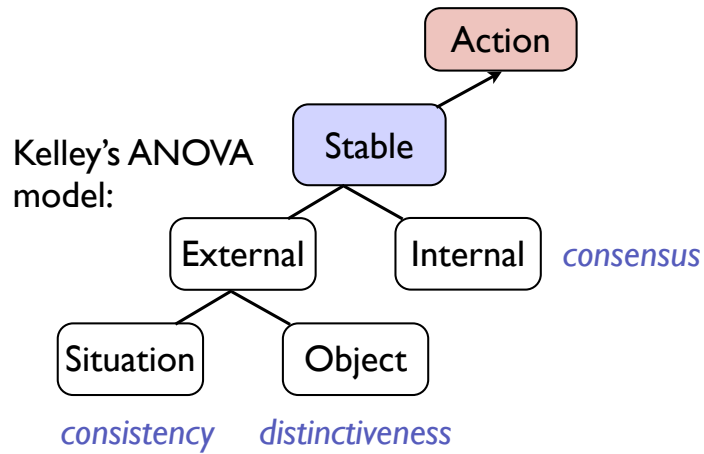
Today's Lecture

*Other's actions are more than spatiotemporal patterns;
they reflect, and predict, internal states*

How do people infer the causes of others' actions?



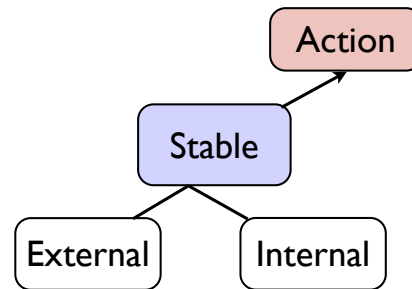
Attribution Theory



Common method:
Something about
the person?
the situation?

“Jon laughs at the comic tonight.”
Does everyone laugh at the comic?
Does Jon laugh at all comics?
Does Jon always laugh at this comic?

Attribution Theory



Common method:
Something about
the person?
the situation?

Phenomena:

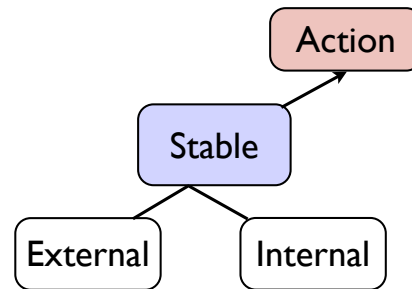
Situation Neglect

a.k.a. Insufficient Discounting, Fundamental Attribution Error

Actor-Observer Asymmetries

own failures attributed to external causes

Attribution Theory



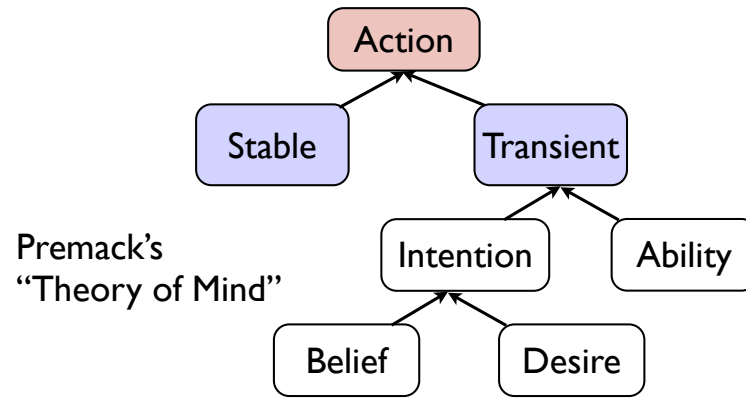
Common method:
Something about
the person?
the situation?

Flaws:

Assumes lots of data

“External” causes: “Jon went on vacation to the Carribean because the weather is hot there.”
Hot weather = external cause
“... but Jon didn’t know it was hot.”
“... but the weather was terrible that week.”

Theory of Mind



Premack's
"Theory of Mind"

Sarah:
Action prediction

Figures removed due to copyright restrictions.

Theory of Mind

The Sally-Anne problem

Figures removed due to copyright restrictions.

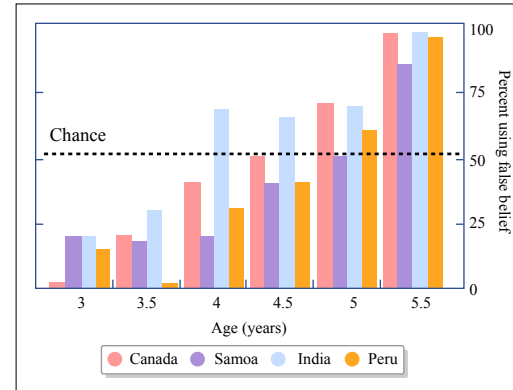


Figure by MIT OpenCourseWare.

Action prediction based on false belief is different from the prediction based on reality.

(Wimmer & Perner 1983, Wellman, Cross and Watson 2001)

& African pygmy hunter gatherers

(Avis & Harris 1999, Callaghan et al 2005)

Theory of Mind

False Belief

Figures removed due to copyright restrictions.

- Location transfer
- False contents
 - 3rd P
 - 1st P past
 - Prediction
 - Explanation

False Photo

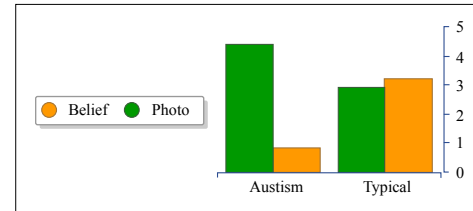


Figure by MIT OpenCourseWare.

(Wellman et al 2001, Atance & O'Neill 2004, Zaitchik 1990, Leslie and Thaiss 1992)

Theory of Mind

Neural mechanism

Susie parked her sports car in the driveway. In the middle of the night. Nathan moved her car into the garage to make room for his minivan. Susie woke up early in the morning.

**She expects to see in the drive
a sportscar a minivan**

A volcano erupted on this Caribbean island three months ago. Barren lava rock is all that remains. Satellite photos show the island as it was before the eruption.

**In the photos the island is covered
in
rock vegetation**

Figure removed due to copyright restrictions.

(Saxe and Kanwisher 2003, Saxe 2006, etc)

Theory of Mind

Neural mechanism

Belief > **Photo**

Individual subjects

Susie parked her sports car in the driveway. In the middle of the night. Nathan moved her car into the garage to make room for his minivan. Susie woke up early in the morning.

She expects to see in the drive
a sportscar a minivan

A volcano erupted on this Caribbean island three months ago. Barren lava rock is all that remains. Satellite photos show the island as it was before the eruption.

In the photos the island is covered
in
rock vegetation

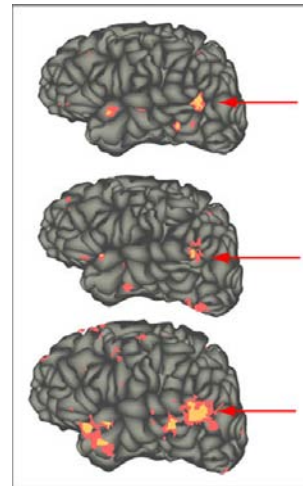


Figure by MIT OpenCourseWare.

Theory of Mind

Neural mechanism

Reality Known

Task: Predict where the girl will look.

Results

Figure removed due to copyright restrictions.

Lesions in

(1) left lateral frontal

(2) left TPJ

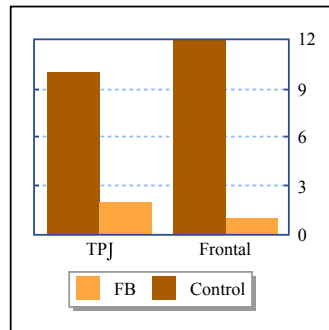


Figure by MIT OpenCourseWare.

(Samson et al 2004, Samson et al 2005)

Theory of Mind

Neural mechanism

Reality Unknown

Task: Indicate where the object is.

Results

Lesions in

Figure removed due to copyright restrictions.

(1) left lateral frontal

(2) left TPJ

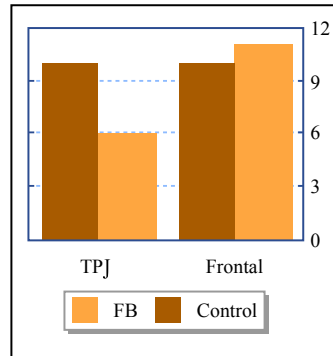


Figure by MIT OpenCourseWare.

(Samson et al 2004, Samson et al 2005)

Theory of Mind

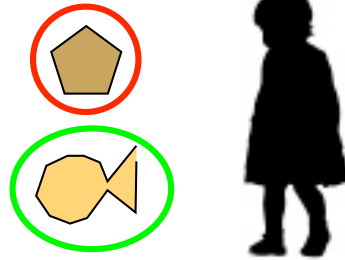
Development

False Belief understanding isn't "having" a
Theory of Mind

Theory of Mind

Development

(I) Diverse Desires

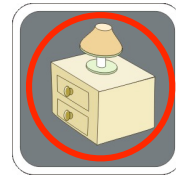


Which one will the girl choose?

Theory of Mind

Development

- (1) Diverse Desires
- (2) Diverse Beliefs

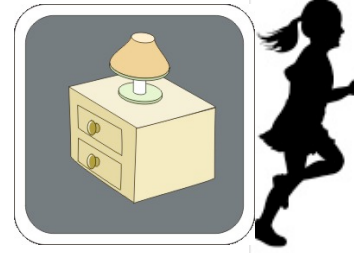


Where will the girl look
for the dog?

Theory of Mind

Development

- (1) Diverse Desires
- (2) Diverse Beliefs
- (3) Access/Ignorance



Does the girl know
what's in the drawer?

Theory of Mind

Development

- (1) Diverse Desires
- (2) Diverse Beliefs
- (3) Access/Ignorance
- (4) False Belief



What does the boy think
is in the box?

Theory of Mind

Development

- (1) Diverse Desires
- (2) Diverse Beliefs
- (3) Access/Ignorance
- (4) False Belief
- (5) Hidden Emotion



How does the boy really
feel?

Theory of Mind Development

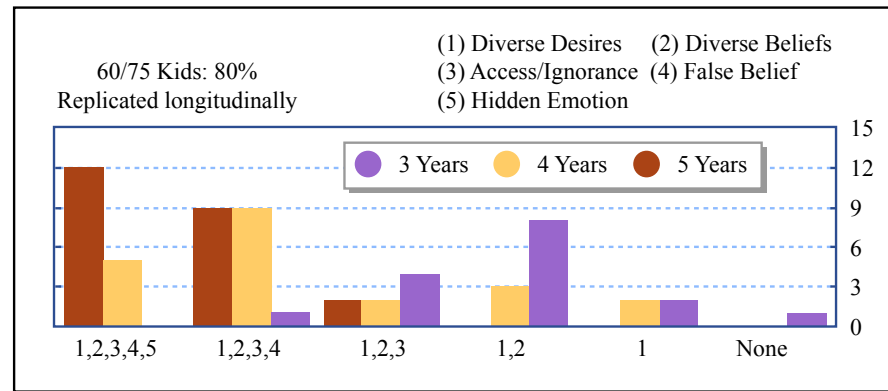


Figure by MIT OpenCourseWare.

Theory of Mind

Non-human primates

Figures removed due to copyright restrictions.

Competitive
Not
Cooperative

Origins of False Belief understanding

MIT OpenCourseWare
<http://ocw.mit.edu>

9.916 Special Topics: Social Animals
Fall 2009

For information about citing these materials or our Terms of Use, visit: <http://ocw.mit.edu/terms>.