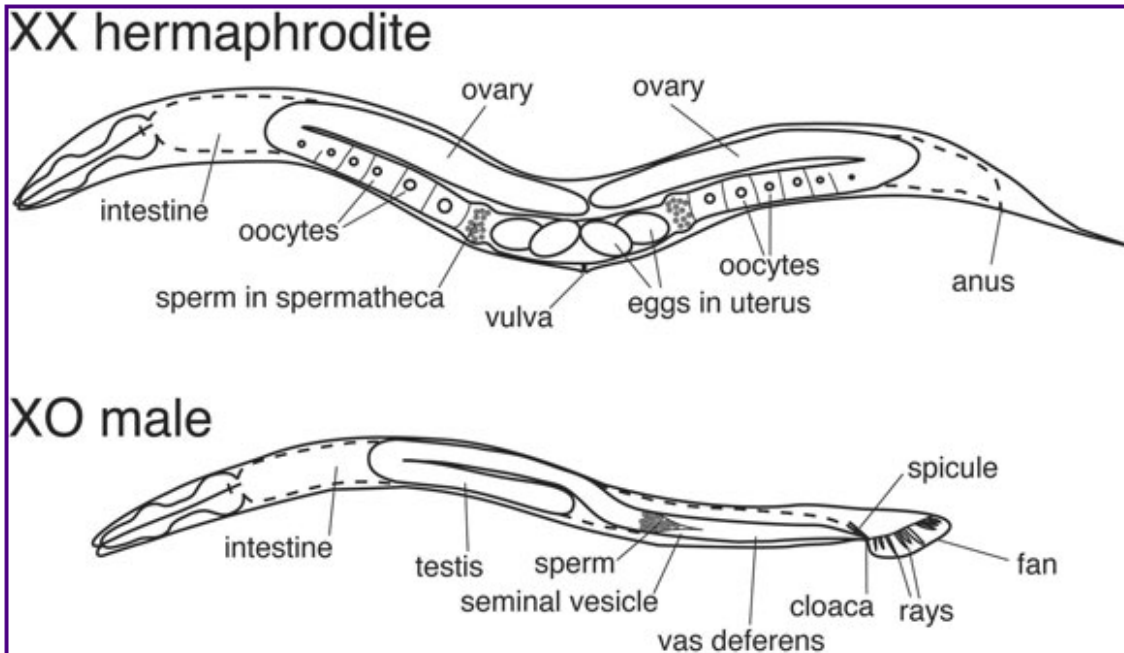


***C. elegans* hermaphrodite and male**

The hermaphrodites and males differ strikingly in overall body size and structures such as the somatic gonad and tail.

MIT OpenCourseWare  
<http://ocw.mit.edu>

7.15 Experimental Molecular Genetics  
Spring 2015

For information about citing these materials or our Terms of Use, visit: <http://ocw.mit.edu/terms>.