

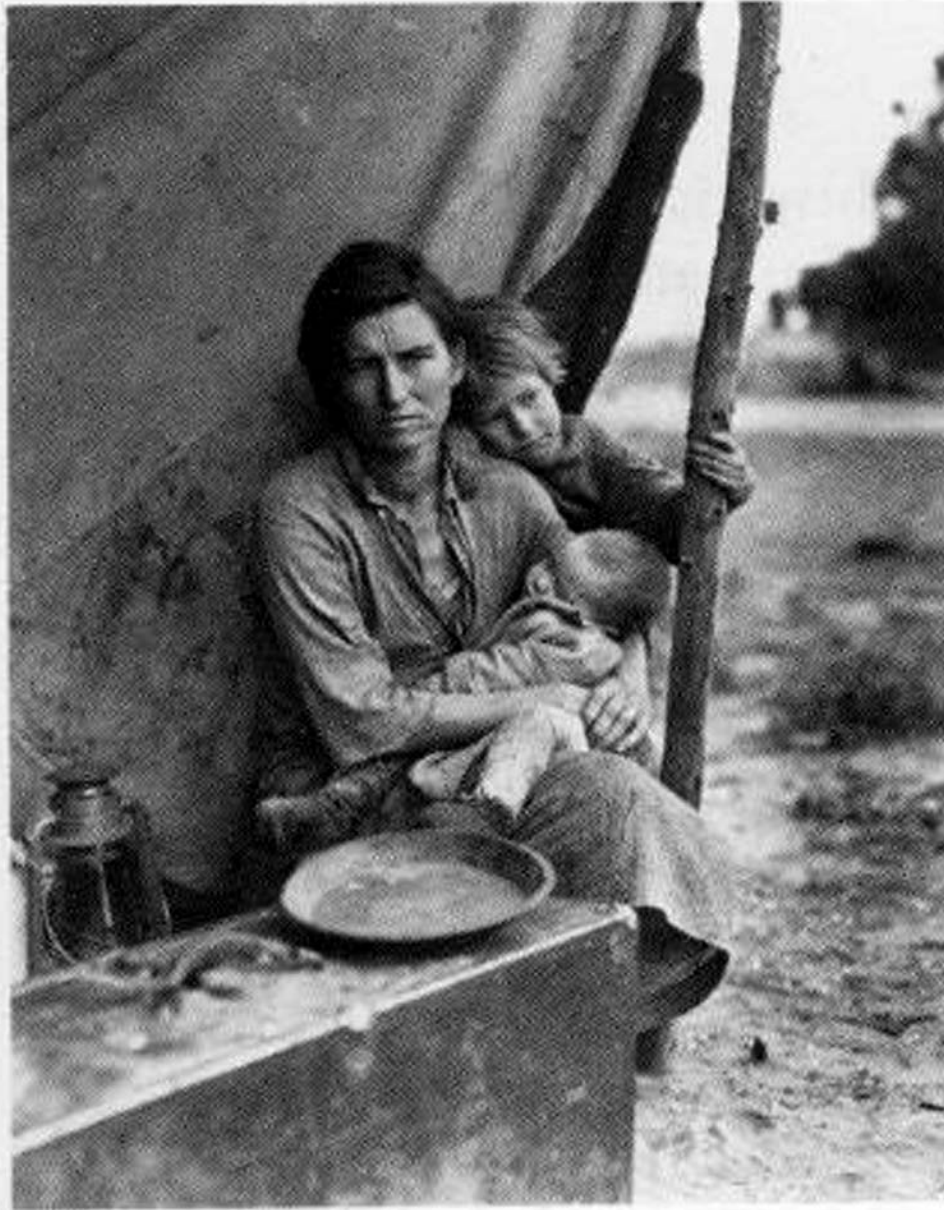
Source: Fleischauer, Carl, and Beverly Brannan. *Documenting America, 1935-1943*. Berkeley, CA: University of California Press, 1988. ISBN: 9780520062214.

All photos are presented courtesy of the Farm Security Administration, US Department of Agriculture. They can be found online at the Library of Congress, Prints & Photographs Division, [FSA-OWI Collection](#), using the reference numbers listed on each page.

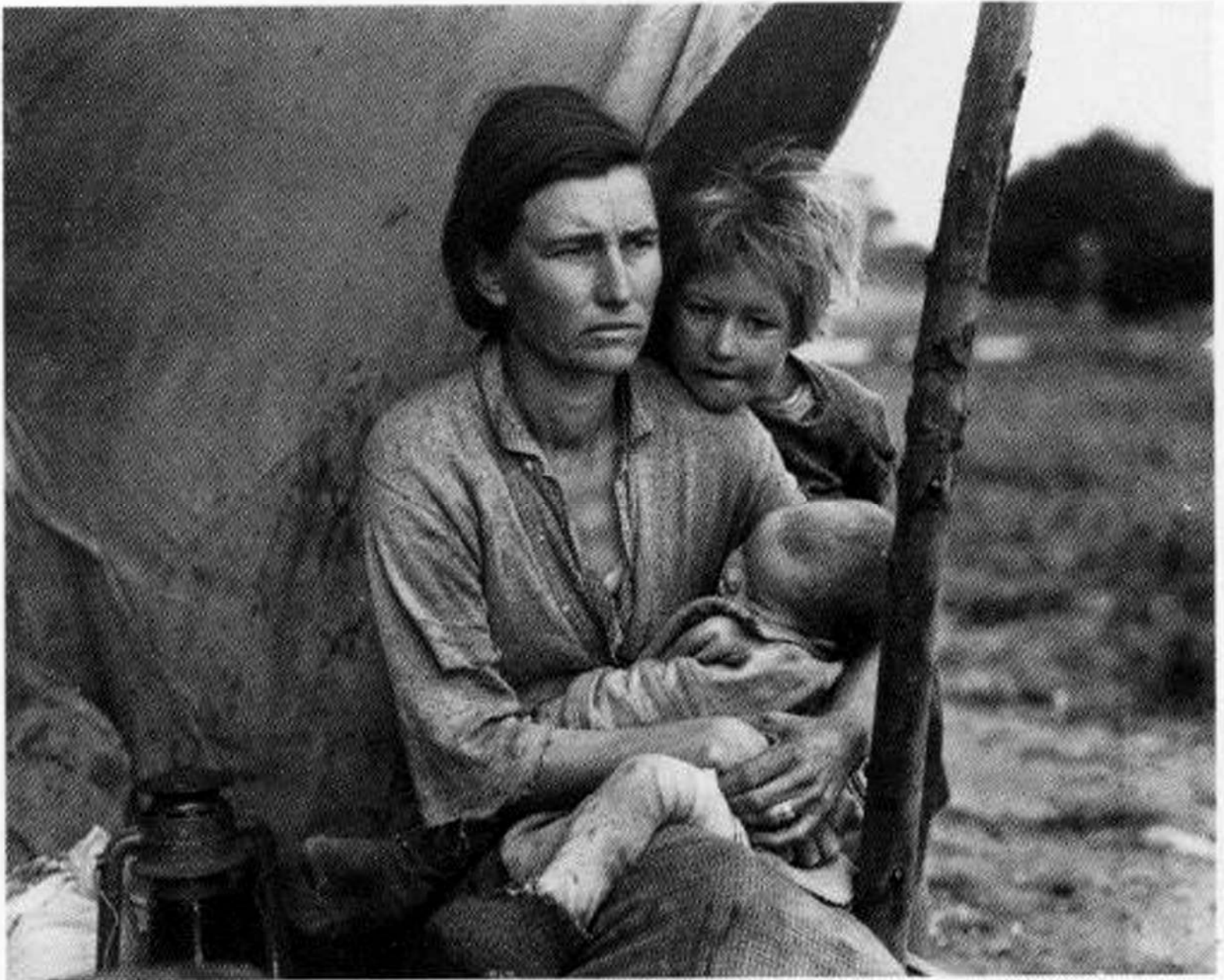
Image removed due to copyright restrictions.
Please see Taylor, Paul S. "Migrant Mother:
1936." *American West* 7 (May 1970): 44.



LC-USZ62-58355



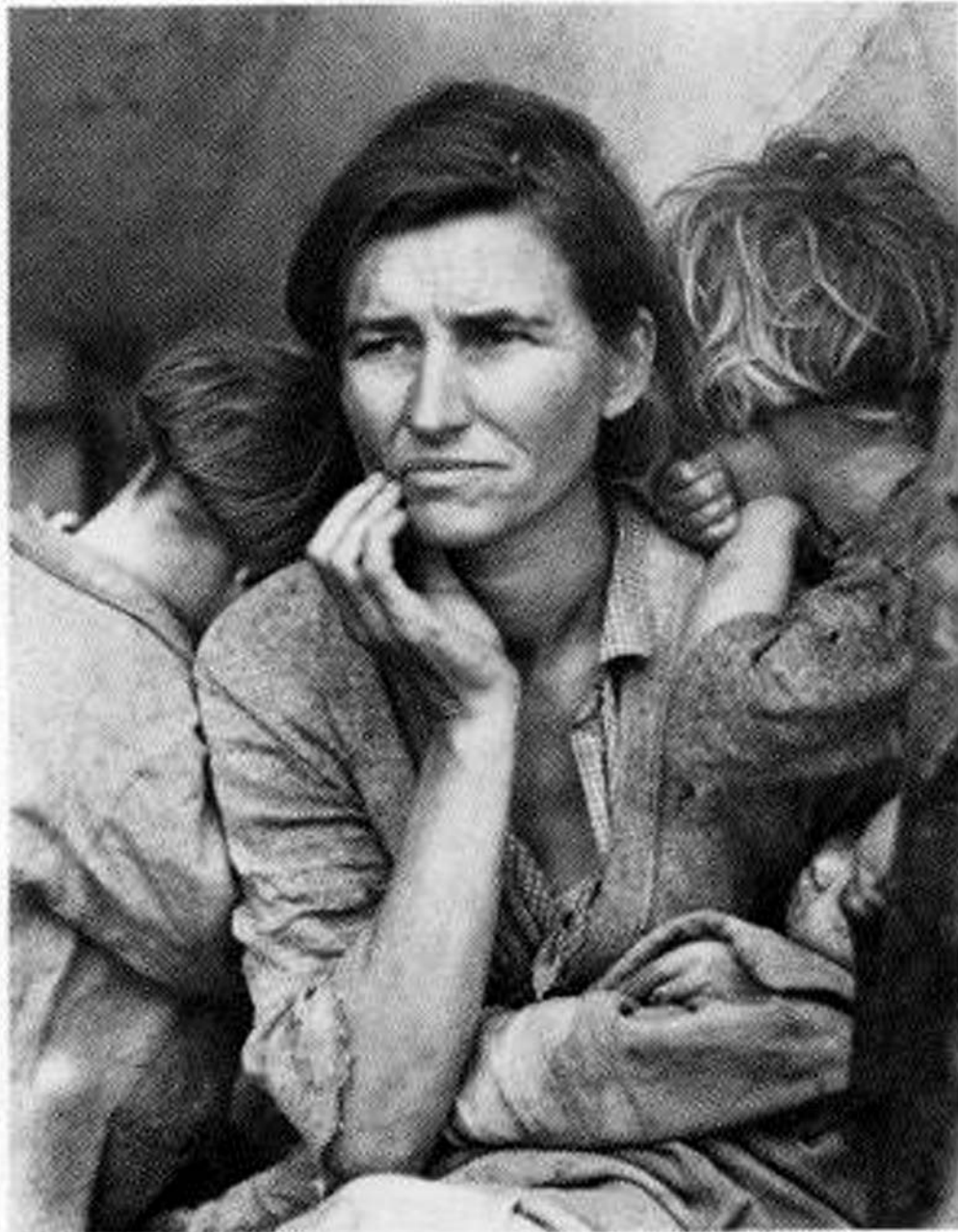
LC-USF34-9095



LC-USF34-9093-C



LC-USF34-9097-C



LC-USF34-9058-C

Look in her Eyes!

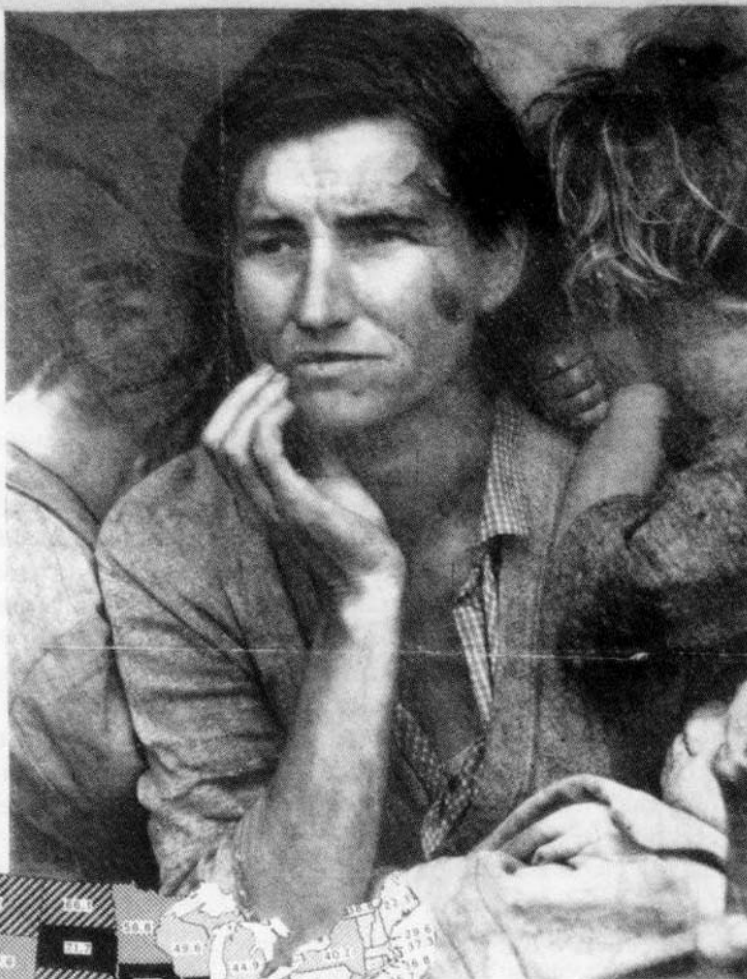
THIS WOMAN is watching something happen to America and to herself and her children who are a part of America. You can see in her eyes the horror of what is happening, for she is not looking at it with the objectivity of a statistician or professor. She is making no study of farm tenancy, but is feeling its lashings.

Millions like her do not have to look at the map below to know that the problems of absentee and corporation land ownership are acute and frightening. These problems grow by terrifying strides with each crop disaster, drought and depression.

Once farm tenancy was thought alien to an America where rugged homesteaders needed only to move west from free farm to free farm. Now the ragged tenant-farmer moves from landlord to landlord.

Besides devastating the farming population, the rise of tenancy devastates the soil itself. The nomad farmer is a stranger in the land. He does not plant trees, nurse shrubs, repair gullies and follow a permanent policy of soil improvement and crop rotation. And worse off than the tenant is the farm-laborer who is subject not only to the will of impoverished tenants, but to the will of the seasons as well.

Revolt in America is brewing faster among the agrarian population than among city workers. Sheriffs are defied in the Corn Belt. Tenant unions and farm labor unions are organized successfully and clashes with owner-vigilantes take place under harvest



moons. But the mobilization of sheriffs solves no problems and enlightened landlords now realize that farm tenancy cannot be fought with torch-light raids.

The Resettlement Administration is trying to move tenants off eroded lands and place them where crops actually rise above the surface of

October 17, 1936

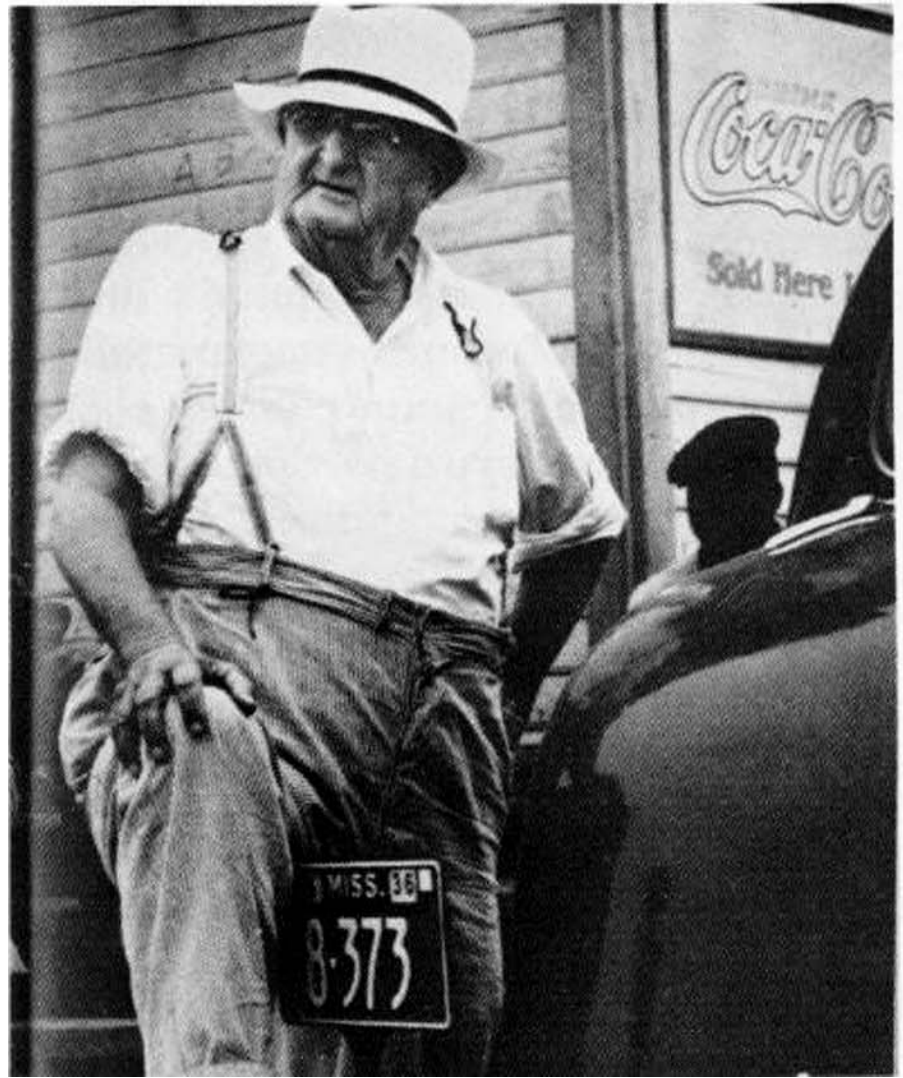
the earth. It is hoped long-term government loans will bring eventual ownership of their new homes to transplanted farmers.

The government can protect the farmer against the institution of the mortgage, just as it can establish mechanisms to protect the farmer against other causes of tenancy—crop disasters, soil erosion, droughts, depression. An enlightened nation looks to its government, no matter of what political party, to salvage the land and those on it so that by the time these frightened children in this photograph reach maturity, the American farmer once more will stand on his own feet and call the plot of ground he works his own.



LC-USF34-T01-009599-C

Text removed due to copyright restrictions. Please see Fig. 7 in MacLeish, Archibald. *Land of the Free*. New York, NY: Harcourt Brace, 1938.



LC-USF34-T01-009599-C

Images and text removed due to copyright restrictions.
Please see Fig. 29 in Fleischauer, Carl, and Beverly
Brannan. *Documenting America, 1935-1943*. Berkeley, CA:
University of California Press, 1988. ISBN: 9780520062214.



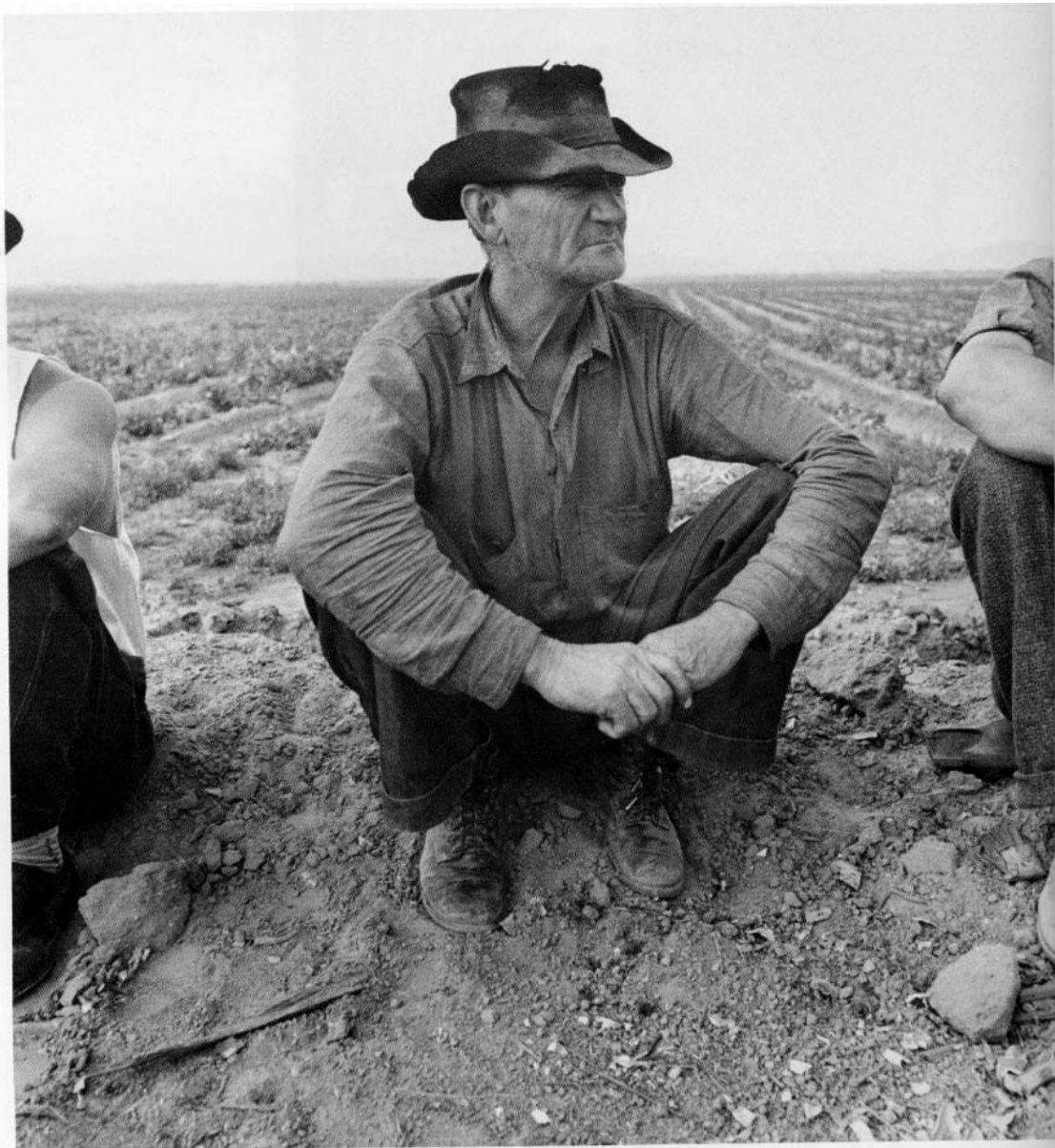
LC-USF3301-006029-M3



LC-USF34-T01-016270-C



LC-USF34-T01-016206-E



LC-USF34-T01-016113-E

MIT OpenCourseWare
<http://ocw.mit.edu>

21A.348 / CMS.835 Photography and Truth
Spring 2008

For information about citing these materials or our Terms of Use, visit: <http://ocw.mit.edu/terms>.